

ENVIRONMENTAL SCRIPT

Docking of vessels, rigs, installation ships
and barges at port of Grenaa



Port of Grenaa
Support your business



norddjurs

Welcome to the Port of Grenaa

Port of Grenaa is one of the largest Danish commercial and industrial ports located centrally and with lots of room for development. Because of its central location and because it is a deep-water port, Grenaa is the perfect place to have vessels, rigs, floating cranes, installation ships, barges, etc. upgraded or serviced. In addition to the physical facilities available, the area also houses a wide range of committed and qualified companies, which can provide competencies throughout the offshore sector's entire value chain.

Port of Grenaa is easy to access thanks to its direct access to the navigation routes in the Kattegat via a wide fairway (see appendix, page 9) with a depth of 12 m, up to 11 m deep port basin and an additional swinging basin of 375 m. The port has made extensive investments over the years, which means that it can now offer the most modern facilities for the upgrading and servicing of vessels.

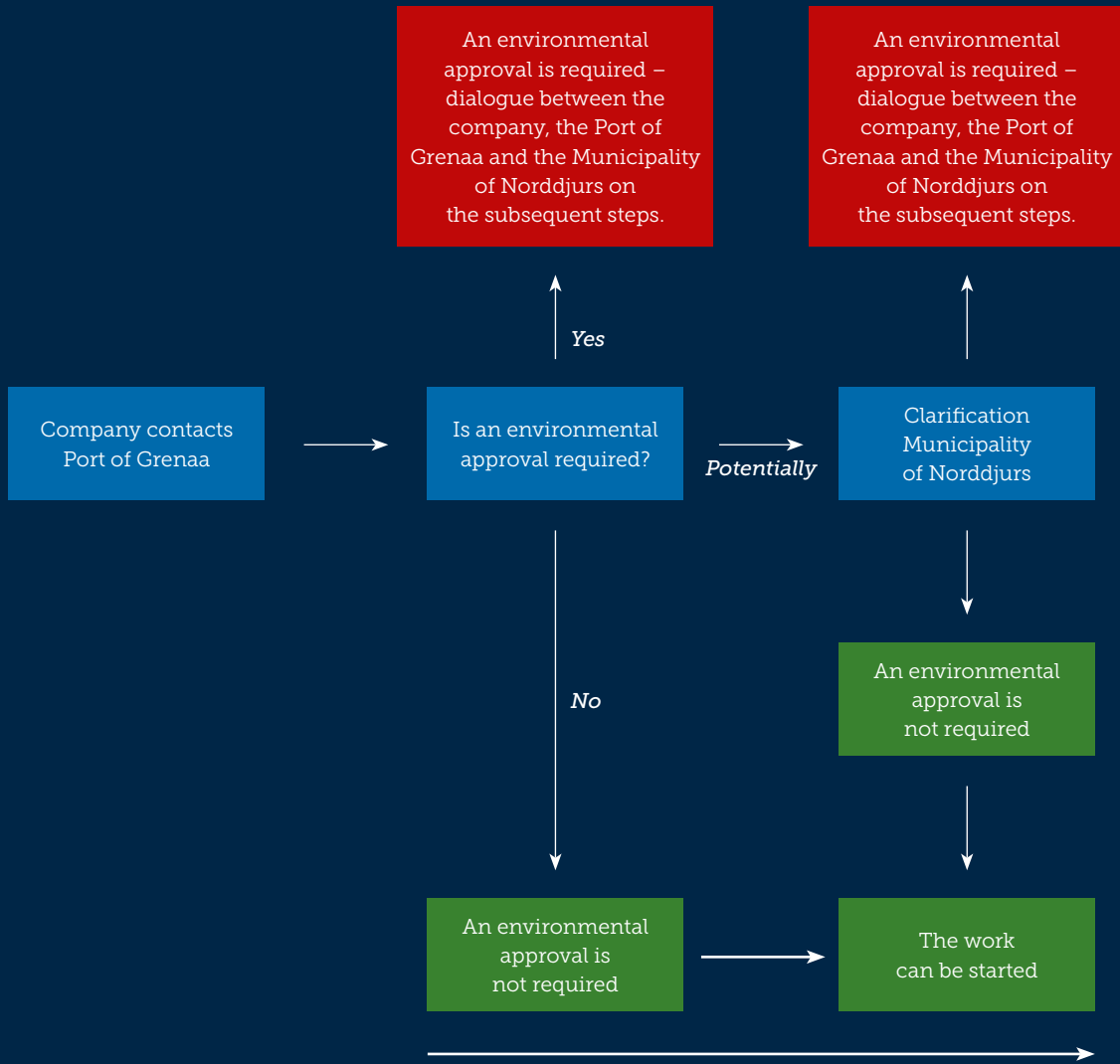
Major focus on the core segments and the good network make the Port of Grenaa a platform where your company can realize its potential. Backed by strong industrial political support, we will make every effort to support your company's ideas and business. The Port of Grenaa's motto is to "SUPPORT YOUR BUSINESS", which permeates the entire organization. Therefore, the Port of Grenaa has cooperated with the Municipality of Norddjurs to compose a script/manual which will give you as a customer and interested party a quick survey of the required permits, guidelines, facilities, etc. that must be in place before the work can start.

All this information is compiled in a script/manual, which you can find on the Port of Grenaa's website www.port-of-grenaa.com.

Besides the script/manual, we also offer a start-up meeting as early as possible during the planning stage. Here, you will meet your future contact persons in the port and municipality. The meeting gives you a perfect opportunity to bring the expectations in line and thus ensure a flexible and smooth process. Follow-up meetings can be arranged, if required.



DIALOGUE PROCESS



ACTIVITIES

The diagram below gives you a survey of which activities must be carried out in an environmentally approved area and which activities can be carried out outside an environmentally approved area. However, the list is not complete. The Port of Grenaa will contact the Municipality of Norddjurs as requested in order to clarify whether a specific activity may be carried out outside an environmentally approved area. The Municipality of Norddjurs will process a request within 14 days.

Activities which – with the required shielding – may be carried out outside of the environmentally approved shipyard area of the Port of Grenaa.	Activities which – with the required shielding – may possibly be carried out outside of the environmentally approved shipyard area of the Port of Grenaa.	Activities which must be carried out at the environmentally approved shipyard area of the Port of Grenaa.
Painting of ship's deck with paint roller or brush	High-pressure cleaning of ship's deck at more than 100 bar for the removal of fouling and old, non-fixed paint on a limited surface.	Sandblasting
High-pressure cleaning of ship's deck at a few bar for removal of salts	Outdoor sandblasting and spray painting on small (max. 10 sq. m.) fixed objects and surfaces (not the sides of the vessel)	High pressure cleaning of a vessel's sides
Indoor painting – any exhaust system installed must be equipped with the required filters to retain environmentally harmful substances.		Spray painting
Indoor sandblasting – the required shielding and exhaust system must be provided and equipped with filters to efficiently retain dust particles.		Metallisation
Indoor repairs which will not cause any harmful environmental strain on the surroundings		Activities which may cause a harmful environmental strain on the surroundings, e.g. noise problems, oil spill, chemical waste, dust generating activities, emissions of environmentally harmful substances
		Ship recycling

DIAGRAM 1. CLASSIFICATION OF TASKS

The Port of Grenaa provides places for stacking & maintenance in the area marked below along quay 56-59.

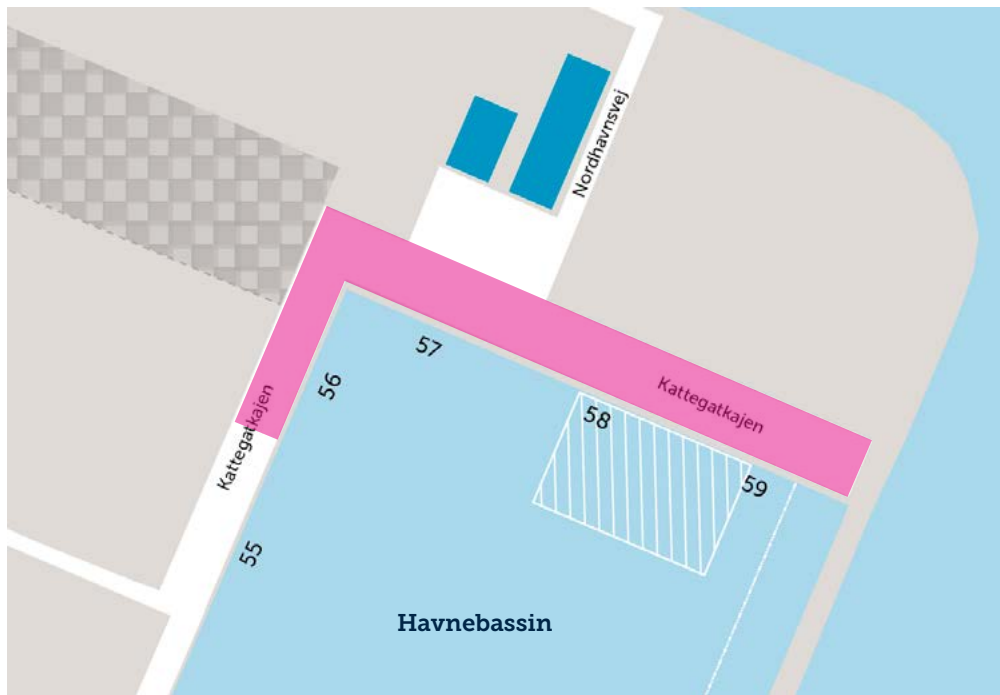


FIGURE 1. SECTION OF THE NORTH PORT OF GRENAA QUAY 56-59

See limit values for noise exposure levels for the area in appendix 2.

Facilities ashore

The Port of Grenaa offers lease of offices, indoor storage rooms and outdoor storage areas in connection with projects. The port is also prepared for the establishment of a temporary office town, crew facilities, canteen, workshop, etc.

Besides, it is possible to construct buildings in connection with projects. In some areas of the port, buildings up to 30 m can be constructed, where half of the built-up area may have a height of up to 60 m. Buildings will always be constructed in leased sites. Please contact the Port of Grenaa for further information.

The Port of Grenaa will contact the Municipality of Norddjurs in order to clarify whether a construction permit is required. It is the aim of Norddjurs Municipality to provide any construction permit required within three weeks.

The application for a construction permit should be sent online to the department Byg & Miljø: www.bygogmiljoe.dk

Other information

The environmental issues mentioned below apply to the entire port area and are not specifically aimed at the reception of vessels.

Noise exposure

Large parts of the Port of Grenaa's areas are designed to allow quite a high noise level, i.e. noise levels of up to 70 dB.

Prices and trading terms of the Port of Grenaa

The handling of the environmental issues mentioned below are described in the Port of Grenaa's prices and trading terms: www.port-of-grenaa.com

- Waste
- Sewage and bathing water
- Engine slop and other oil and chemical waste
- Refuse disposal

Drinking water

It is presumed that the vessel receives drinking water from the port's drinking water distribution system. The port's drinking water distribution system is equipped with a non-return protection (a TBS-valve or similar).

Cooling water

Water from the port basin can be used as cooling water and returned to the basin again, provided that only the temperature of the cooling water has been impacted. Polluted cooling water has to be handled as process waste water.

Port security (ISPS) at docking of vessels

The entire area is covered by ISPS.

Road legislation/signage

If you require signage during your project, the Port of Grenaa will be glad to assist you and make the initial contact to the relevant authorities.

Preparedness

The Port of Grenaa gives high priority to safety. That is the reason why we have a close and ongoing dialogue with the relevant authorities. Please contact the Port of Grenaa if you have questions about our preparedness.

Air pollution

The Danish Environmental Protection Agency has issued indicative guidelines on limit values for the emission of dust and odour. Activities related to the vessels may not exceed these values. The Port of Grenaa can assist you in clarifying such issues.

Surface water

During regular cleaning of a vessel's deck and surfaces it must be ensured that no polluting or contaminating substances (oil, etc.) are discharged into the port basin, for instance when it rains.

Activities which require floating barriers

During a vessel's stay at the port, a floating barrier must be available. The floating barrier must be long enough to bar the area that may be affected by the activities carried out. The floating barrier must either be established before the work starts or stored on the quay in the immediate vicinity in order to allow prompt establishment of the barrier if pollution of the basin with floating substances occurs. Prior to the arrival of the vessel, a procedure must be drawn up, describing how the floating barrier is to be established. The procedure must be approved by the Municipality of Norddjurs. The Port of Grenaa will head the contact with the municipality.

Diesel oil

During its stay at the Port of Grenaa, a vessel may only use diesel oil with a sulphur content of maximum 0.1 %.

Asbestos

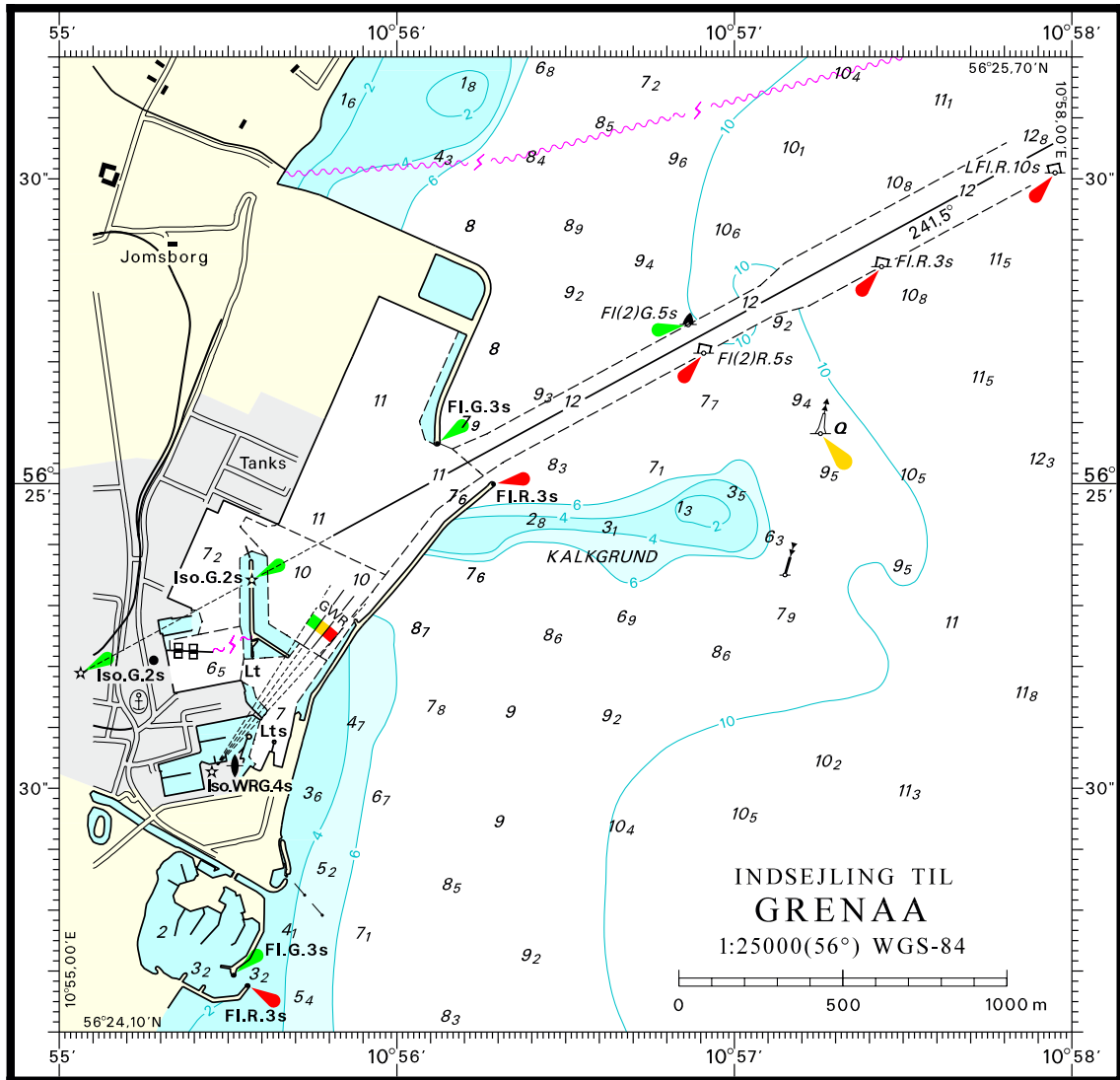
If the work on the vessel involves materials containing asbestos, the Municipality of Norddjurs must be informed before the work starts. The Port of Grenaa can assist you with this.

Work light

Work light and other light onboard the vessel must be arranged in a way that ensures that it will not be of inconvenience to nearby residents, the companies in the port and other users of the port.

Company	Contact	Extension	E-mail
Port of Grenaa Havnecentervej 1 DK-8500 Grenaa Phone (+45) 8758 7600	Mette Klit Environmental Coordinator	(+45) 8758 7600	mek@grenaahavn.dk
	Theis Gisselbæk Business Developer	(+45) 8758 7600	tgi@grenaahavn.dk
	24-hour shift - maritime	(+45) 8758 7600	info@grenaahavn.dk
Municipality of Norddjurs Torvet 3 DK-8500 Grenaa Phone (+45) 8959 100	Mick Rasmussen Environment	(+45) 8959 1000	mras@norddjurs.dk
Emergency service - Ambulance - Emergency medical care - Fire - Environmental accident - Acute pollution		112	
Police		114	
Marius Pedersen A/S	www.mariuspedersen.dk	(+45) 8730 4070	aarhus@mariuspedersen.dk
Rygaard Transport A/S	www.rygaard.dk	(+45) 8758 8000	rygaard@rygaard.dk

APPENDIX 1



APPENDIX 2
EXTRACT FROM DISTRICT PLAN 161, PAGE 9

Areas (actual application)	Period	Monday – Friday 7am-6pm	Monday – Friday 6pm-10 pm	Every day 10pm-7am
		Saturday 7am-2pm	Saturday 2pm-10 pm	
		Sunday and bank holidays 7am-10pm		
1. Business and industry areas		70	70	70
2. Business and industry areas with a ban on noisy business		60	60	60
3. Areas with mixed residential and business development, centre areas (city centres)		55	45	40
4. High rise areas		50	45	40
5. Residential areas with open and low development		45	40	35
6. Holiday home areas and publicly accessible recreational areas. Special nature areas		40	35	35

Suggested exposure levels for noise from businesses measured outdoors. numbers are given as the equivalent adjusted noise level in db(a) as a function of period and area type.

Area 3H2.1, 3H2.3, 3H2.4 and 3H2.5 belong to group 2, Business and industry areas with a ban on noisy business, and as is evident, the suggested exposure levels are 60 DB(A) for all days of the week at all times. Area 3H2.2 belongs to group 1, Business and industry areas, and the suggested exposure levels are 70 dB(A) for all days of the week at all times.

The protected publicly accessible recreational area north of Saltbækken will have an inflicted exposure level of noise larger than the values given in the diagram of exposure levels for noise. The purpose of the preservation is to safeguard scenic considerations. Therefore, the preservation does not contain noise regulation. The city council therefore finds it acceptable for the area to be inflicted with noise from activities outside the area that are larger than the values given in the guiding diagram.